

## Our Needs- Food, House & Clothes

### Fill in the blanks-

energy	protective	balanced	heat, cold	water
Bamboo, mud, leaves	mind, body	plants	salt	wind, rain

1. Food gives us \_\_\_\_\_ to work and play.
2. Energy giving food keeps our \_\_\_\_\_ and \_\_\_\_\_ healthy.
3. A \_\_\_\_\_ diet contains all types of nutrients in proper amount.
4. We get cereals and pulses from \_\_\_\_\_.
5. \_\_\_\_\_ helps our brain to work properly.
6. \_\_\_\_\_ is needed for digestion of food.
7. We need house to protect us from \_\_\_\_\_, \_\_\_\_\_, \_\_\_\_\_ and \_\_\_\_\_.
8. A kutcha house is made up of \_\_\_\_\_, \_\_\_\_\_ and \_\_\_\_\_.
9. There should be proper \_\_\_\_\_ system in the house.
10. There should be many windows for proper \_\_\_\_\_ in the house.

### Answer in one sentence.

1. We need food to \_\_\_\_\_  
\_\_\_\_\_
2. Energy-giving food gives us \_\_\_\_\_  
\_\_\_\_\_
3. Body building helps us to \_\_\_\_\_  
\_\_\_\_\_
4. Protective food helps us to \_\_\_\_\_  
\_\_\_\_\_
5. Water helps us to \_\_\_\_\_  
\_\_\_\_\_
6. Salt helps us to \_\_\_\_\_  
\_\_\_\_\_

**Draw and colour 2 energy-giving food**

**Draw and colour 2 body building food**

**Draw and colour 2 food items which we get from animals**

**Draw and colour 2 food items which we get from plants**

**Draw and colour 2 body building food**

**Give short answers-**

- How many types of houses are there? \_\_\_\_\_

- What is a pucca house? \_\_\_\_\_

- What is a kutcha house? \_\_\_\_\_

- Where do gypsies live? \_\_\_\_\_

- Give 2 examples of a temporary house. \_\_\_\_\_

**Write [T] for True and [F] for False**

1. Tents are made of canvas cloth.
2. Eskimos live in a caravan
3. The bungalows are example of a kutcha house
4. The house boat is a temporary house
5. Igloo is a pucca house.
6. Pucca house is made up of brick, cement, steel and iron.
7. We wear clothes to protect ourselves from animals.
8. Silk is a natural fibre.
9. Policeman wears a uniform.
10. The process of making silk is called sericulture.

**Draw the following-**

2 Kutcha houses

2 types of pucca houses

**Circle the correct answer**

- We get wool from

Sheep                      Goat                      Camel

- The clothes people wear for special work are called

Uniform                      Traditional Dress                      Party Wear

- One of these is a man-made fibre

Silk                      Nylon                      Cotton

- Gumboots protect us from

Cold                      Heat                      Rain

- People who weave a cloth are called

Weavers      Teachers      Painters

**Draw the process of making wool**

## Draw the process of making silk

- What are fibres? \_\_\_\_\_

- What is a man-made fibre? Give examples \_\_\_\_\_

- What is a natural fibre? Give examples \_\_\_\_\_

- What kind of clothes early man used to wear? \_\_\_\_\_

- Why do we wear clothes? \_\_\_\_\_

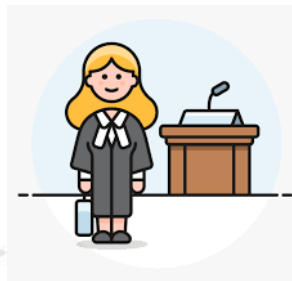
We wear clothes according to-

_____	_____
_____	_____
_____	

Draw the house in which eskimos live

Draw the house in which gypsies live

Recognise the people shown below from their dresses





---

Draw your favourite dress here and fill it with your favourite colour.

PracticeNLearn.com